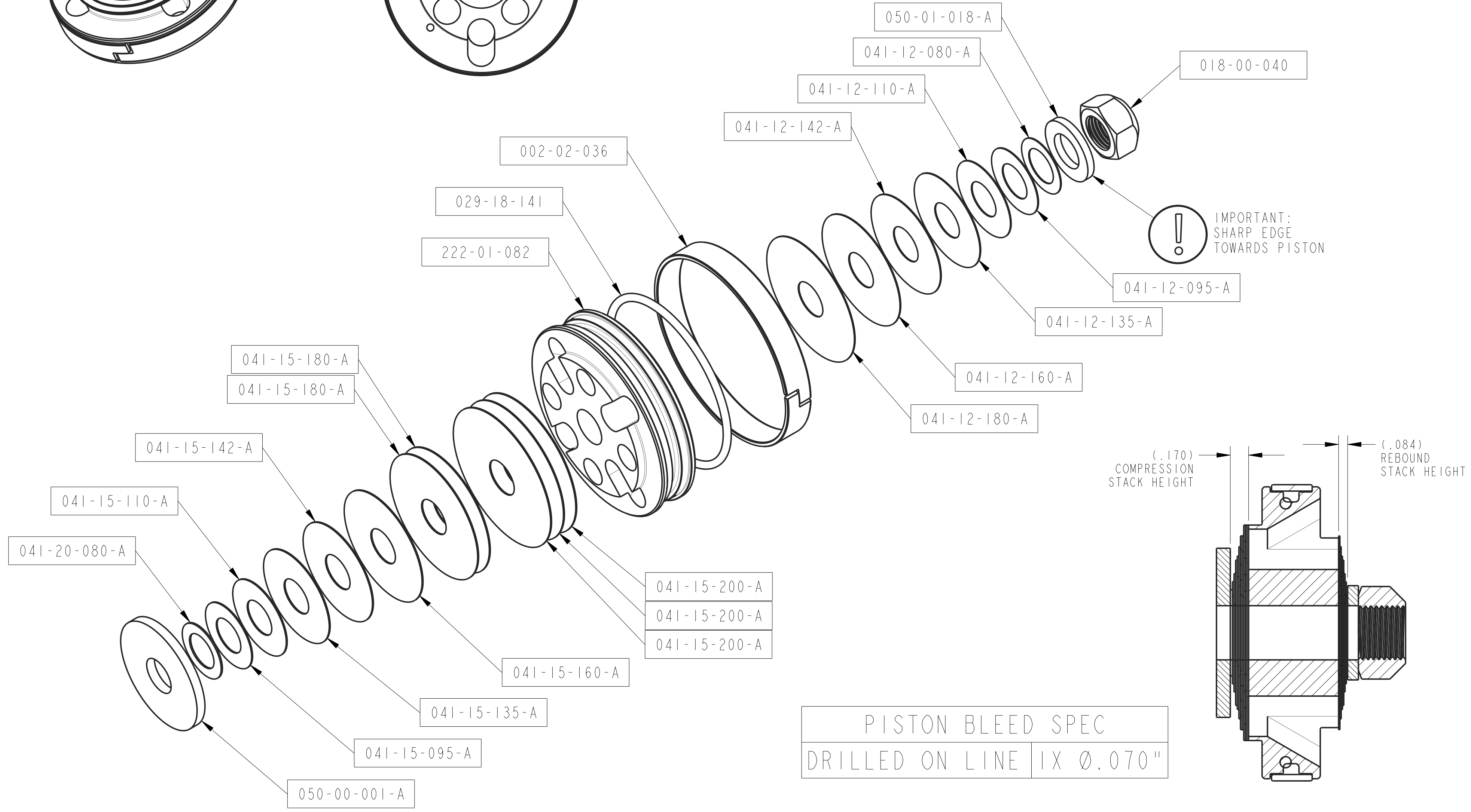
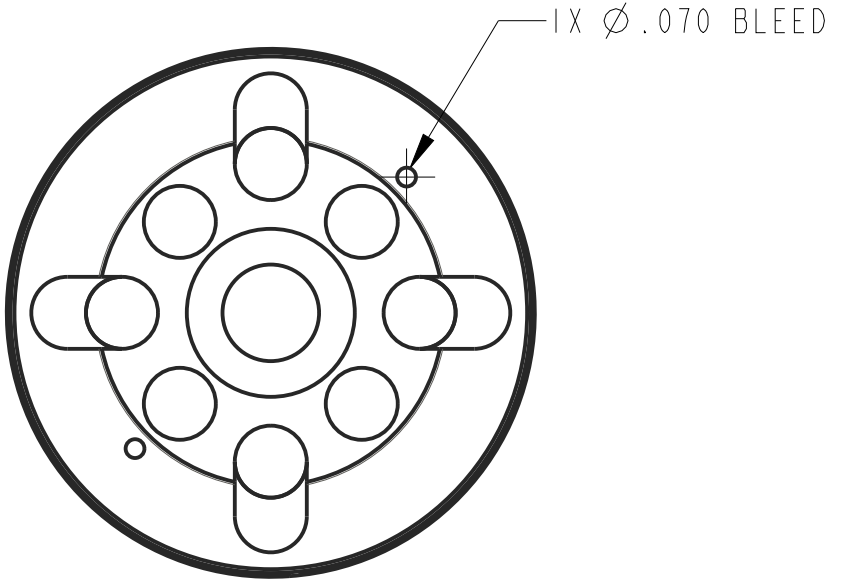
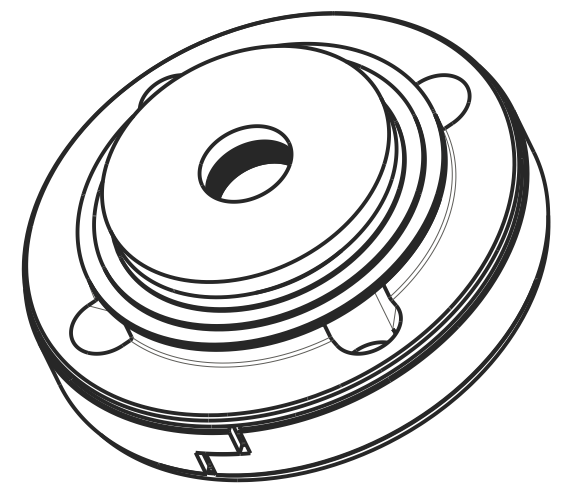


— PROPRIETARY —  
 THIS DOCUMENT CONTAINS CONFIDENTIAL, PROPRIETARY INFORMATION THAT IS FOX PROPERTY. DO NOT DISCLOSE TO OR DUPLICATE FOR OTHERS EXCEPT AS AUTHORIZED BY FOX.

REVISIONS				
ZONE	REV	DESCRIPTION	DATE	APPROVED
	A	PRODUCTION RELEASE	1/02/20	BS



PISTON BLEED SPEC  
 DRILLED ON LINE 1X Ø.070"

- NOTES:
1. REFERENCE: 3,2/70 (1X .070 BLEED)
  2. FIRST APPLICATION: 3.0 SHORT COURSE BYPASS

UNLESS OTHERWISE SPECIFIED: DIMENSIONS ARE IN INCHES (MM) CLOCKING OF FEATURES IS NOT IMPORTANT		PER ASME Y14.5-2018		<b>FOX</b> FOX FACTORY, INC.	
DEV PROJECT #:		APPROVALS		TITLE	
TOLERANCES ARE:		DWN. BY M. SHELTON		Valving Assembly: 3.0 Factory Series, Tuned Combination 610	
DECIMALS .XX [.X] ±.01 [0.25]	ANGLES ± 1°	CHK. BY		SIZE	DWG. NO.
.XXX [.XX] ±.005 [0.13]		ENG. B. SMITH		C	807-24-610
THIRD ANGLE PROJECTION		MFG.		PLOT SCALE: 1.5:1	
PROTO / MAKE FROM PN: XXX-XX-XXX		QC.		SHEET: 1 OF 2	

4

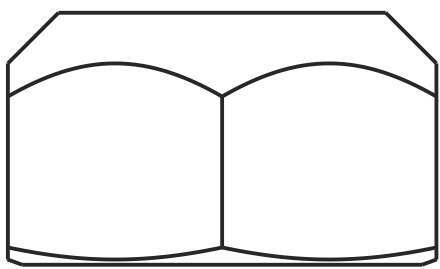
3

2

1

— PROPRIETARY —

THIS DOCUMENT CONTAINS CONFIDENTIAL, PROPRIETARY INFORMATION THAT IS FOX PROPERTY. DO NOT DISCLOSE TO OR DUPLICATE FOR OTHERS EXCEPT AS AUTHORIZED BY FOX.



BACK UP WASHER



0.800 X .012



0.950 X .012



1.100 X .012



1.350 X .012



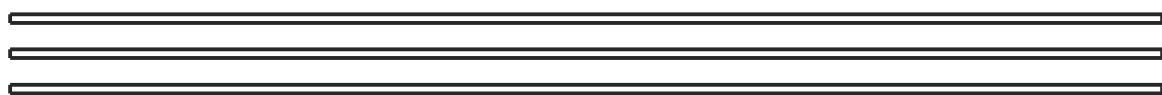
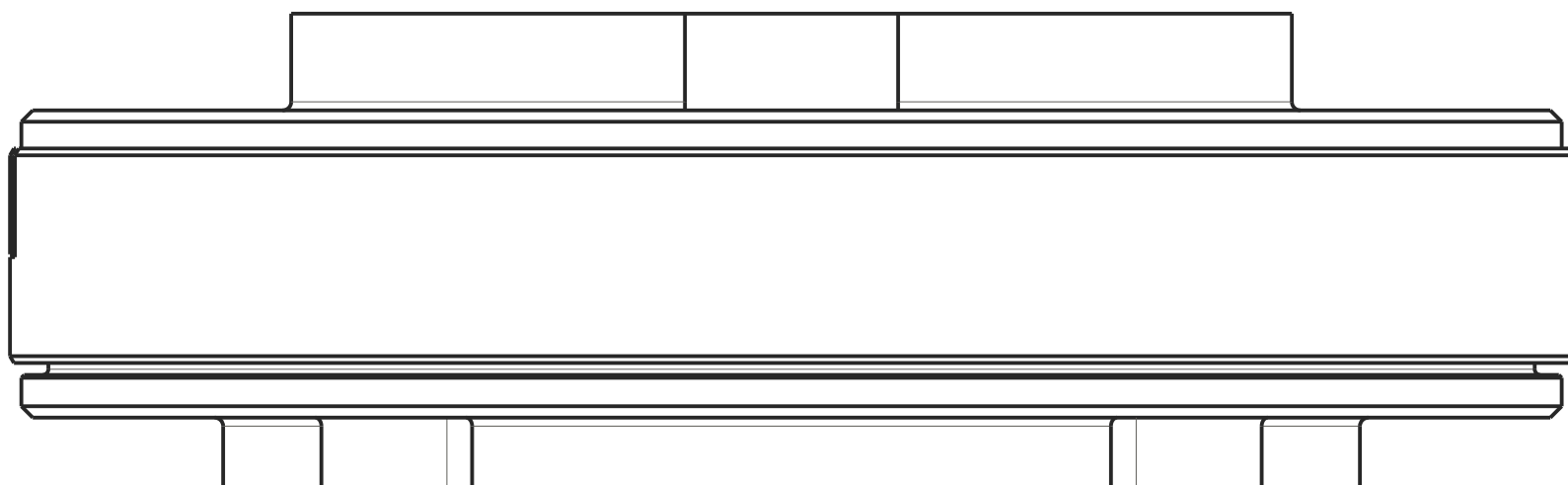
1.425 X .012



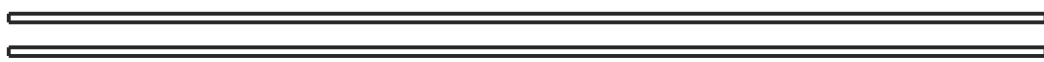
1.600 X .012



1.800 X .012



(3X) 2.000 X .015



(2X) 1.800 X .015



1.600 X .015



1.425 X .015



1.350 X .015



1.100 X .015



0.950 X .015



0.800 X .020



TOP OUT WASHER

D

D

C

C

B

B

A

A

4

3

2

1

SIZE C	DWG. NO. 807-24-610	REV A
PLOT SCALE: 3:1:1		SHEET: 2 OF 2