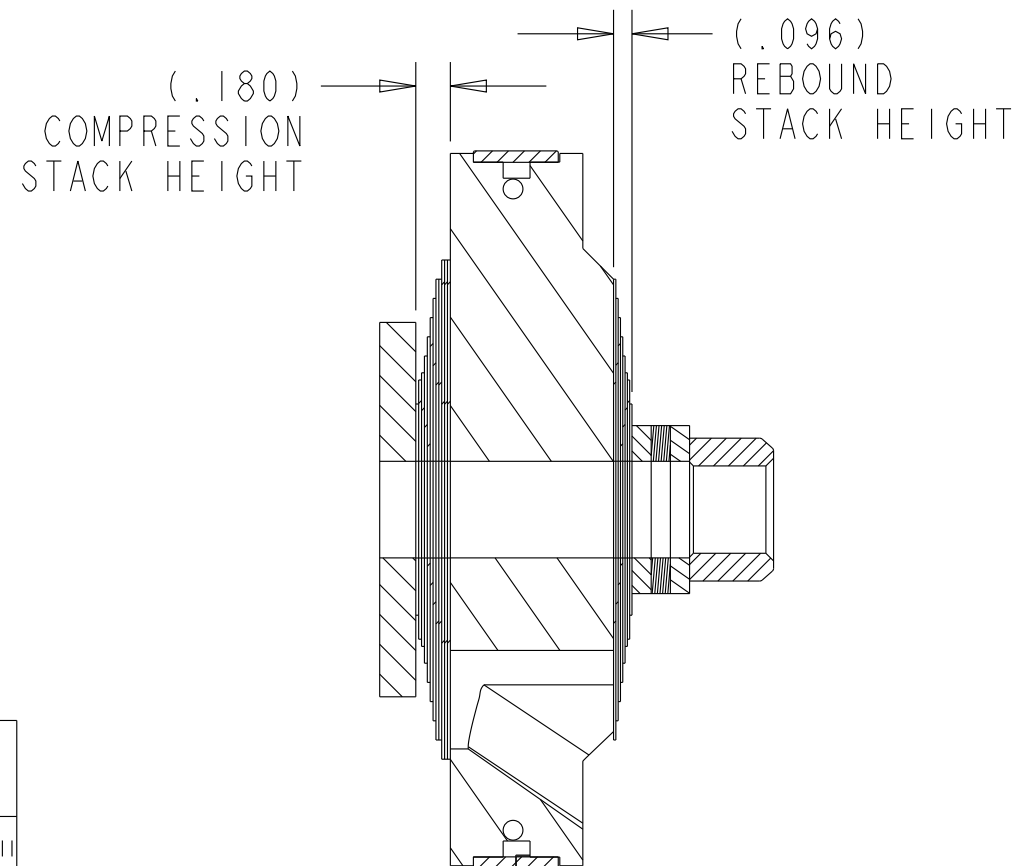
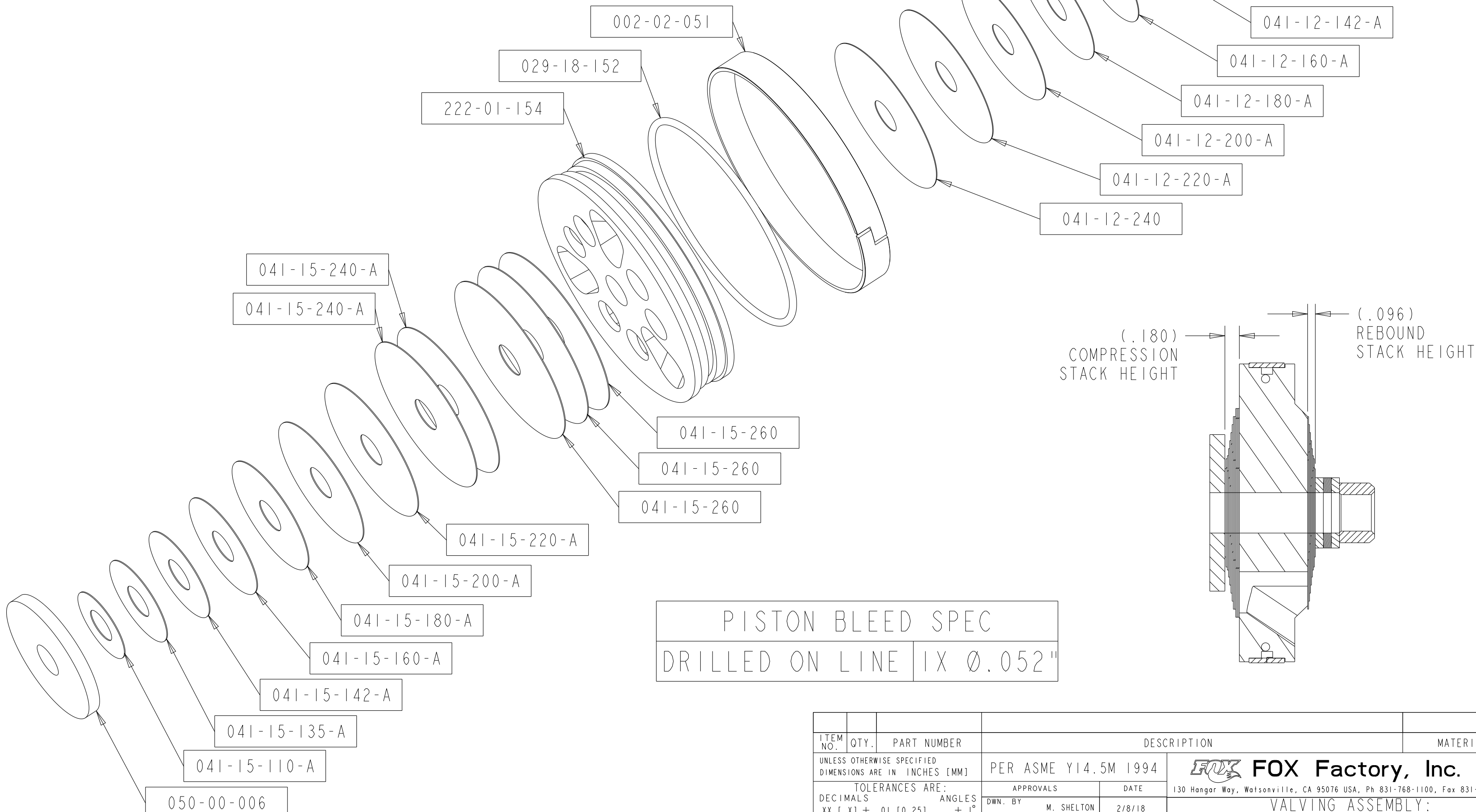
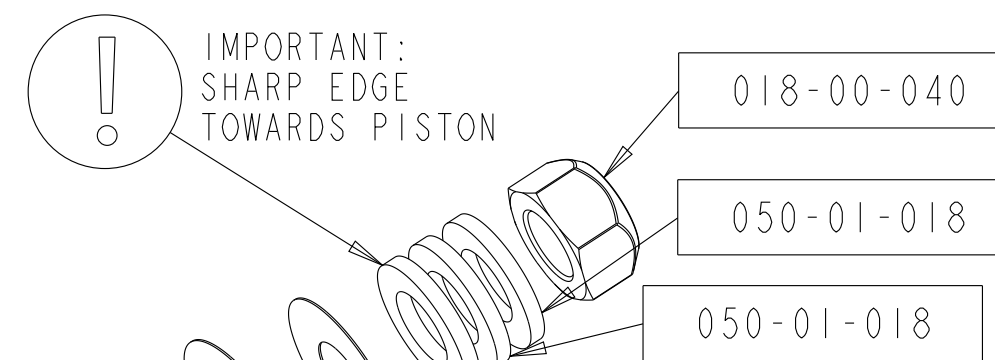
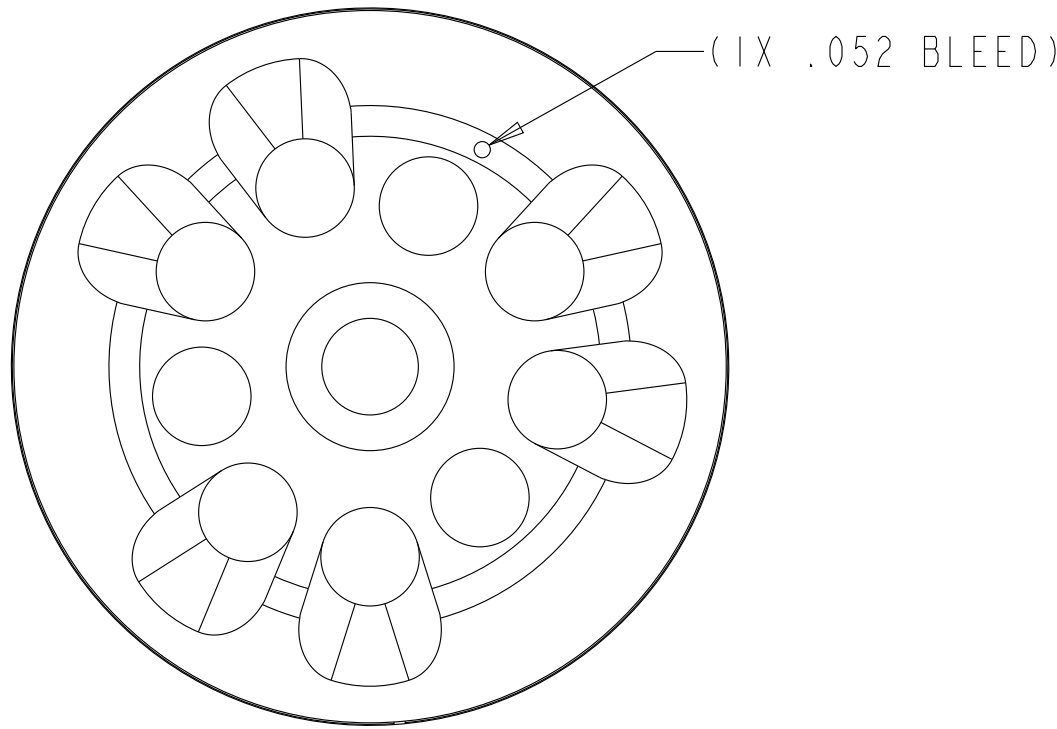
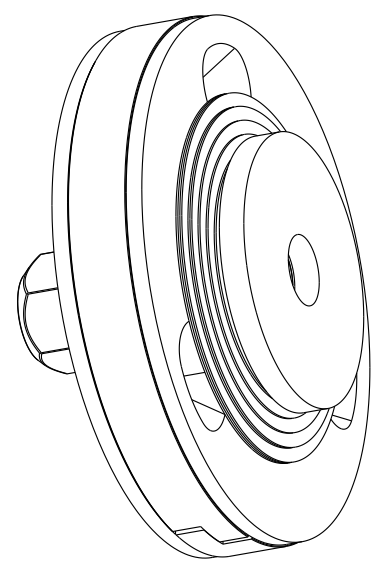


— PROPRIETARY —
 THIS DOCUMENT CONTAINS CONFIDENTIAL, PROPRIETARY INFORMATION
 THAT IS FOX PROPERTY. DO NOT DISCLOSE TO OR DUPLICATE
 FOR OTHERS EXCEPT AS AUTHORIZED BY FOX.

REVISIONS				
ZONE	REV	DESCRIPTION	DATE	APPROVED
	A	PRODUCTION RELEASE	2/8/18	CR



PISTON BLEED SPEC
 DRILLED ON LINE IX Ø.052"

NOTES:
 1. REFERENCE: 3,2/70 (IX .052 BLEED)
 2. FIRST APPLICATION: 4.0 SERIES BYPASS

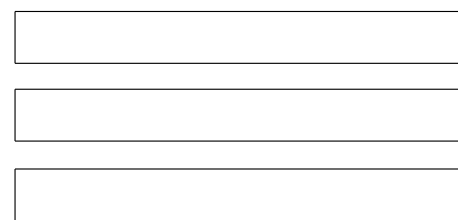
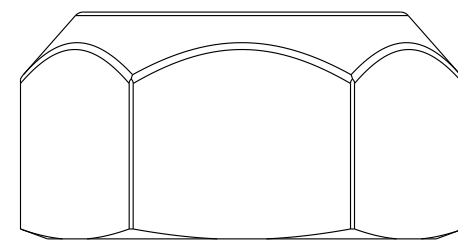
ITEM NO.	QTY.	PART NUMBER	DESCRIPTION	MATERIAL SPEC
UNLESS OTHERWISE SPECIFIED DIMENSIONS ARE IN INCHES [MM]		PER ASME Y14.5M 1994		FOX Factory, Inc. 130 Hangar Way, Watsonville, CA 95076 USA, Ph 831-768-1100, Fax 831-768-9312
TOLERANCES ARE:		APPROVALS	DATE	
DECIMALS	ANGLES	DWN. BY	M. SHELTON	2/8/18
.XX [.X] ± .01 [0,25]	± 1°	CHK. BY		
.XXX [.XX] ± .005 [0,13]		ENG.	C. RAHDE	2/8/18
THIRD ANGLE PROJECTION		MFG.		
		ADD.		
			SIZE	PART NO.
			C	807-24-801
PLOT SCALE 1.00:1				SHEET 1 OF 2

4

3

2

1



BACK UP WASHER

1.100 X .012

1.350 X .012

1.420 X .012

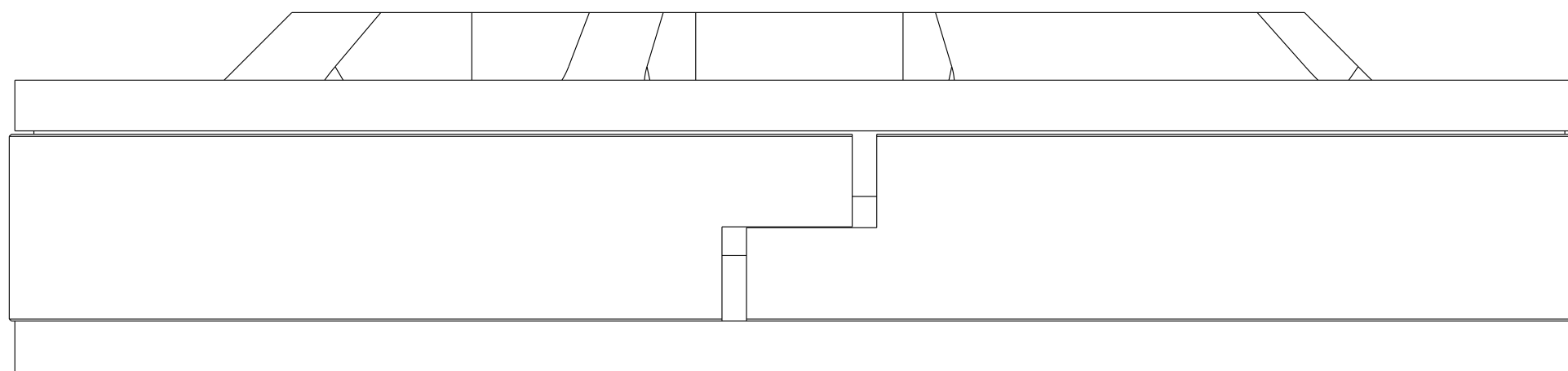
1.600 X .012

1.800 X .012

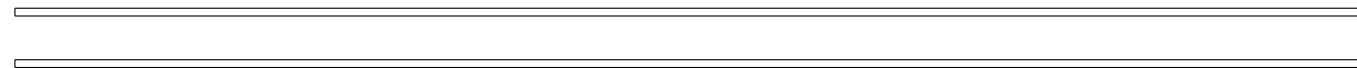
2.000 X .012

2.200 X .012

2.400 X .012



(3X) 2.600 X .015



(2X) 2.400 X .015



2.200 X .015

2.000 X .015

1.800 X .015

1.600 X .015

1.420 X .015

1.350 X .015

1.100 X .015



TOP OUT WASHER

— PROPRIETARY —
 THIS DOCUMENT CONTAINS CONFIDENTIAL, PROPRIETARY INFORMATION
 THAT IS FOX PROPERTY. DO NOT DISCLOSE OR DUPLICATE
 FOR OTHERS EXCEPT AS AUTHORIZED BY FOX

SIZE	CAGE NO.	DWG. NO.	REV.
PLOT SCALE	1.000	INCHES	807-24-801
SHEET		2 OF 2	

4

3

2

1

D

D

C

C

B

B

A

A