

# ROUGH COUNTRY

## SUSPENSION SYSTEMS®

### 2019-23 SILVERADO/SIERRA CREW CAB HD2 STEPS

Thank you for choosing Rough Country.

Please read instructions before beginning installation. Check the kit hardware against the parts list. Be sure you have all needed parts and know where they go. Also, please review the tools needed list and make sure you have all of the needed tools.

#### Kit Hardware:

8-Step Brackets  
 16-8MM X 25MM Bolts  
 16-8mm Flat Washers  
 8-6mm Double Bolt Plates  
 16-6mm Nylock Nuts  
 16-6mm Flat Washers

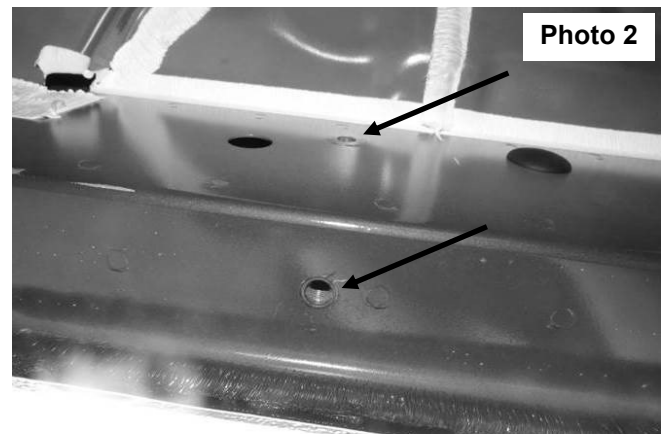
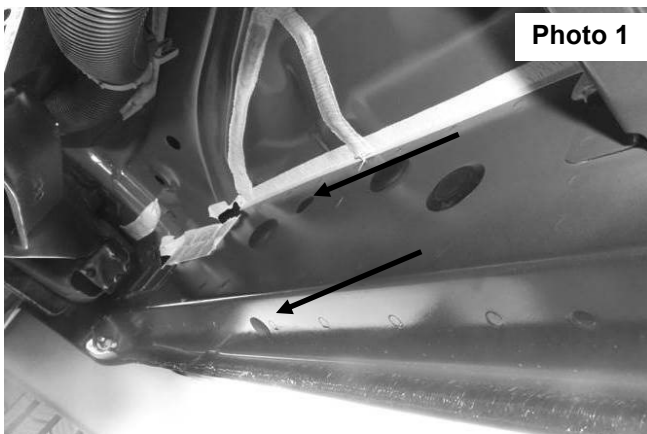
#### Tools Needed:

10mm Socket  
 10MM Wrench  
 13mm Socket  
 17mm Socket  
 17mm Wrench  
 18mm Socket  
 Ratchet  
 Torque Wrench

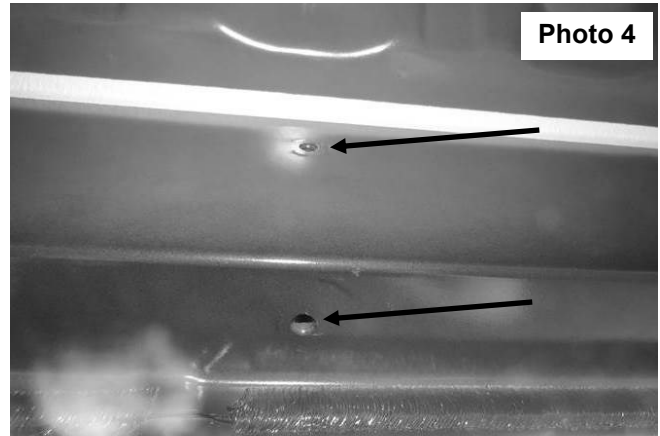
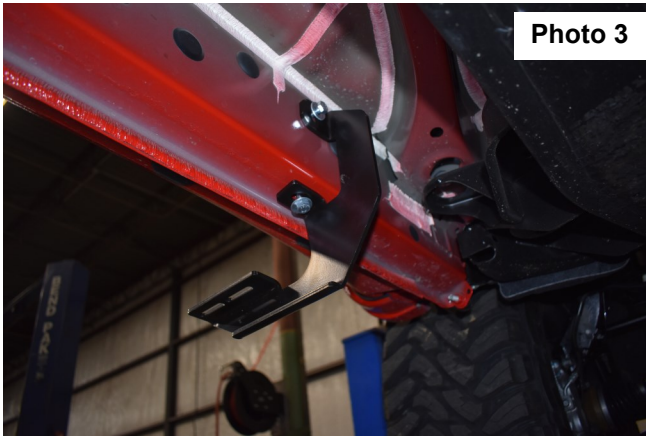


#### INSTALLATION INSTRUCTIONS

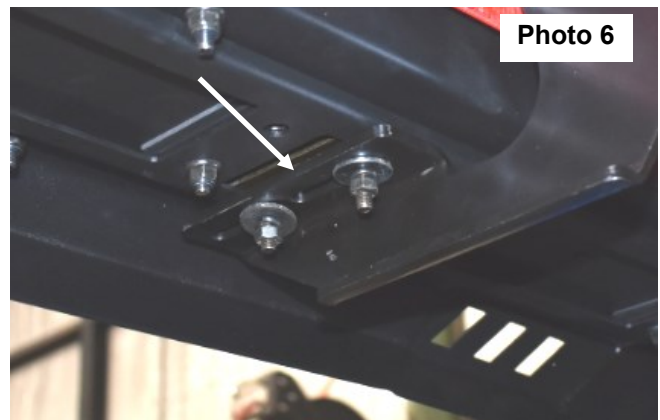
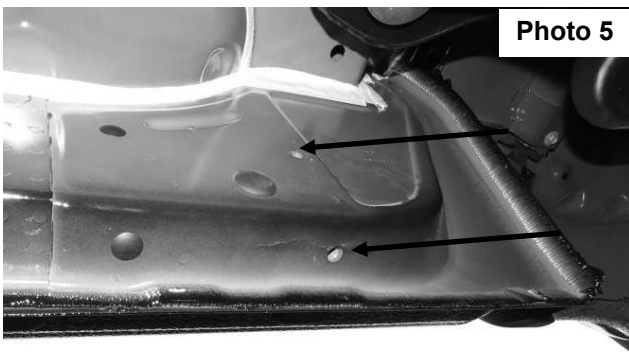
1. Start the installation under the driver side of the vehicle. Locate the 6 plugs along the bottom edge of the body. Mounting Brackets will bolt to the 1st, 3rd, 4th and 6th threaded mounting holes.
2. Remove the plastic plugs shown in **Photo 1** from each mounting location. Directly above each threaded insert is a top mounting location on the side of the body panel. Hold a bracket up in place to help determine the mounting holes to use along the body. Note: Thread an 8mm Hex Bolt into the threaded inserts to clear paint as required. **See Photo 2.**



3. Select a mounting Bracket. Starting at the front of the driver side, bolt the mounting bracket to the factory threaded holes with supplied 8mm Hex Bolts and 8mm Flat Washers. **See Photo 3.** Do not tighten hardware at this time.
4. Repeat to install the remaining 2 driver side Mounting Brackets along the body panel. **See Photo 4 & 5.** Secure with the supplied 8mm bolts and 8mm flat washers.



5. Select the driver side Running Board. Place the step on the brackets. **DO NOT** slide the steps on the mounting brackets or damage to the finish may result.
6. Locate the slots in the step and install the supplied flag bolts as shown in **Photo 6.**



7. Position the step on the body brackets as desired and secure with the supplied 6mm bolts, flat washers, and hex nuts.
8. Tighten the 6mm hardware using a 10mm socket and wrench. **See Photo 7.**



9. Repeat for passenger side.





#### Torque Specs

Thread Size	Wrench Size	Torque Spec
6mm	10mm	8 ft/lb
8mm	13mm	18 ft/lb
10mm	17mm	37 ft/lb
12mm	18mm	65 ft/lb

By purchasing any item sold by Rough Country, LLC, the buyer expressly warrants that he/she is in compliance with all applicable , State, and Local laws and regulations regarding the purchase, ownership, and use of the item. It shall be the buyers responsibility to comply with all Federal, State and Local laws governing the sales of any items listed, illustrated or sold. The buyer expressly agrees to indemnify and hold harmless Rough Country, LLC for all claims resulting directly or indirectly from the purchase, ownership, or use of the items.

