

Dead Pedal

2018+ JL/JT

STJL-03



TOOLS REQUIRED

- 18mm Socket
- 18mm Wrench
- 13mm Socket
- 12" Socket Extension Recommended

SKILL LEVEL

- Intermediate
 - 1 persons
- Little skill level required, you can easily install it by yourself.

TIME REQUIRED

- 1 Hour
- Time to install this should only take about an hour

WARNINGS/CAUTIONS BEFORE STARTING INSTALLATION

Before you install this kit – Read and understand all instructions, warnings, cautions, and notes contained in this installation instruction guide. Consult your vehicle owner's manual for proper disconnection of electrical and lifting of vehicle if required for installation of this product.

This install may require some technical skills and knowledge of basic mechanical work. If you do not feel that you are capable of performing this install please take this product to a trained professional.

After reading this guide please contact us with any questions or concerns before installing product.
Customer Service: 855-680-9595

DV8 Offroad is not responsible for any bodily injury or harm to you or your vehicle as a result of an improper install.

Proper installation of this kit required knowledge of the factory recommended procedures for removal and installation of original equipment components. We recommend that the factory shop manual and any special tools needed to service your vehicle be on hand during the installation. Installation of this kit without proper knowledge of the factory recommended procedures may affect the performance of these components and the safety of the vehicle

- Always wear eye protection when operating power tools

Inspect all contents of this package to make sure product is not damaged and all installation hardware has been included. If parts are missing from kit, please be prepared to provide the following information

1. Name of purchase location
2. Bar Code on side of box
3. Date above bar code
4. Date inside box cover



INSTALLATION MANUAL

STEP 1

Begin by unpacking all items and inspecting for missing pieces or damage. If you have any concerns, please contact the company the product was purchased from.

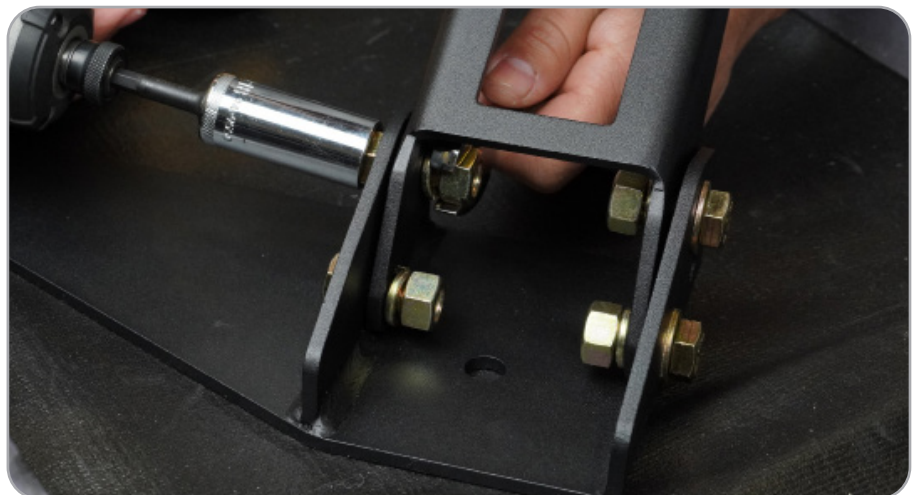
Hardware Included:

- (4) M12x25mm Bolts
- (4) M12 Nuts
- (4) M12 Split Washers
- (8) M12 Flat Washers



STEP 2

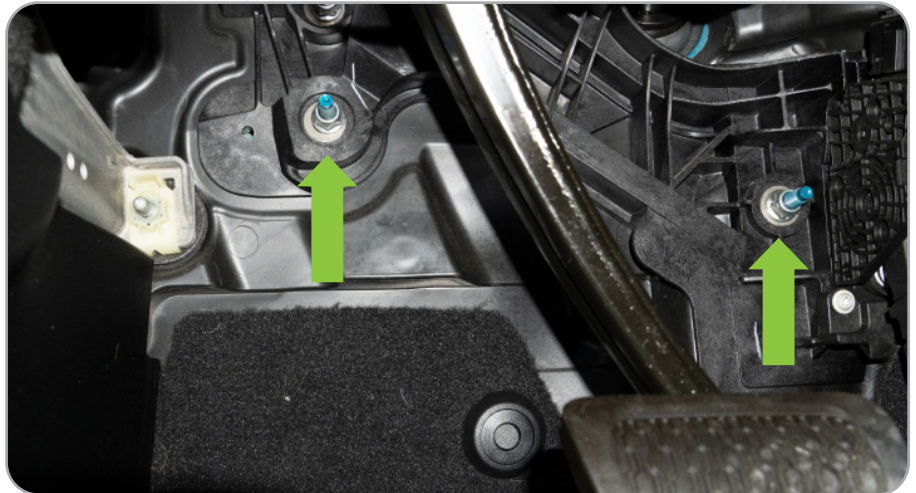
Assemble dead pedal using the provided hardware (do not tighten just yet to allow adjustment later in the install).



INSTALLATION MANUAL

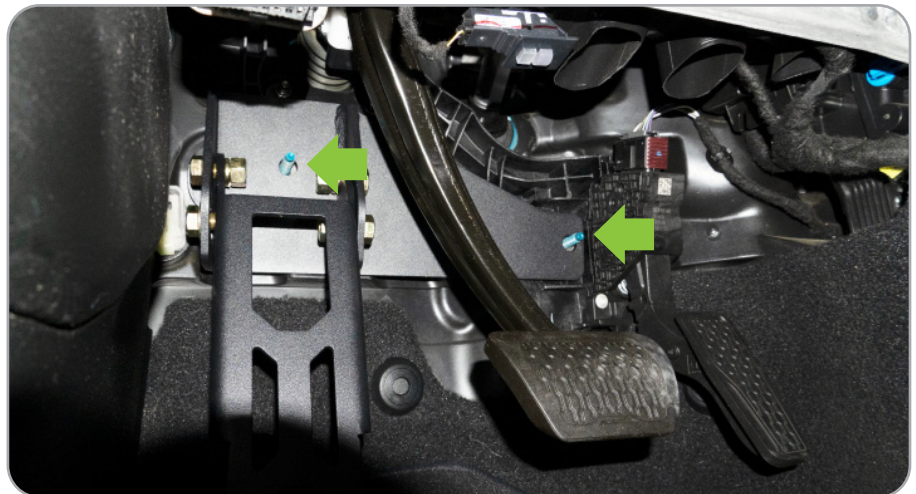
STEP 3

Under the dash on the driver side, remove the two 13mm nuts located on each side of the brake pedal.



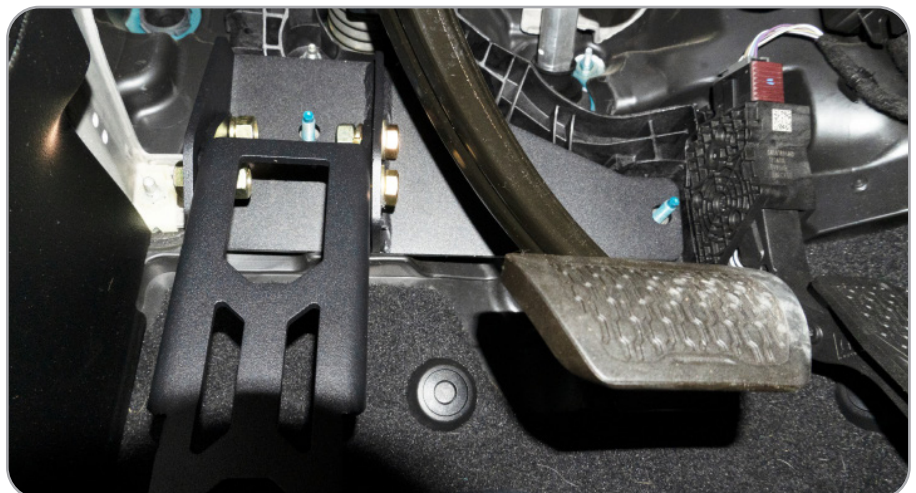
STEP 4

Mount the dead pedal to the two screws and reinstall both 13mm nuts and secure tightly.



STEP 5

Once you have adjusted the dead peddle to your preference tighten all four 18mm hardware. While sitting in the vehicle, adjust the dead pedal to your preference and then secure all four 18mm bolts.



INSTALLATION MANUAL

STEP 6

Double check all hardware is secured tightly.

