

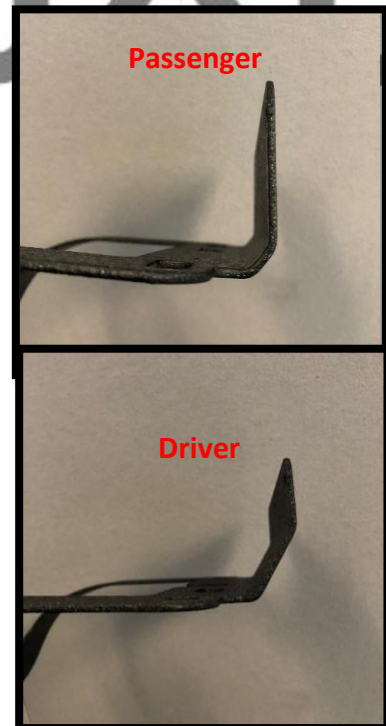
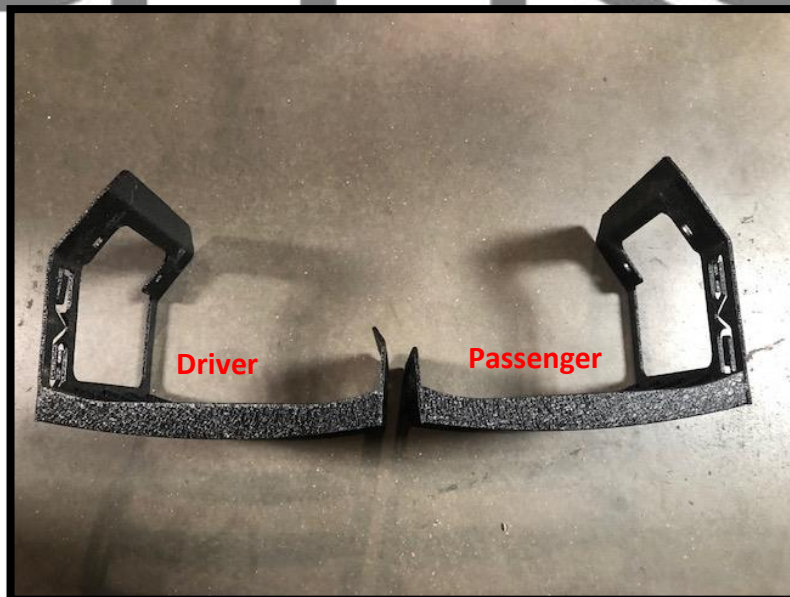
DV8 JL Tail Light Guards (Non-proximity sensor)

TLJL-01

1. On each side of the JL, near the tail light, you will see these covers. Pop them off to access the single tail light bolt. Remove the bolt and the light should come out.



2. Once removed, separate both the backing bracket and the light guard to their appropriate side.



3. Place backing bracket on the back of the light.



4. Slide the light and backing bracket into the tail light guard as shown below. Install screws loosely.



5. Once both lights are built, connect the wiring and place them back into the holes for reinstallation. With the tail light guard housing loose, you can align them perfectly before placing the factory light bolt into light. Secure the light guard bolts before securing the light. Replace caps on interior over light bolts.



If you have any questions, please email us at infor@dv8offroad.com or call us at 951-680-9595